

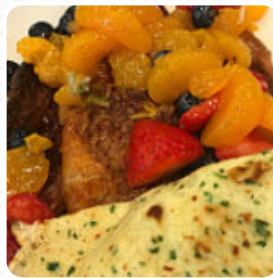


La Madeleine Menu

<https://menuweb.menu>

242 Crown Park Ave, 20878, Gaithersburg, US, United States

+12404494480,+12404494879 - <https://lamadeleine.com/locations/gaithersburg-downtown-crown>



The menu of La Madeleine from Gaithersburg contains about 30 different menus and drinks. On average you pay about \$8.1 for a dish / drink. Nestled in a cozy corner, this charming bakery and café impresses with its delightful array of pastries, sandwiches, and salads. Diners rave about the authentic French treats, like the strawberry crepe and macarons, showcasing a commitment to quality. However, inconsistent service is a growing concern, with reports of long wait times and unresponsive staff tarnishing the experience. While some visits are marked by quick service and satisfied customers, others reveal significant delays and a lack of attentiveness. Regular patrons express hope for improvement, as the delicious menu warrants a revisit if service issues are addressed.

Nasi Kerabu Terminal Speisekarte

Rice dishes

SMASHED FRIED CHICKEN WITH RICE

Coffee

KOPI O

Food

CHICKEN RICE

Menu A La Carte

STEAMED RICE

Minuman Sejuk

LEMON TEH PING

Classic Beverages

TEA NAI

MILO NAI

Popular

MILO NAI PING

NASI KERABU AYAM BEREMPAH

Beverages

MILO O PING

KITCHAI

LEMON TEA

KITCHAI PING

SIRAP BANDUNG PING

Minuman

NESCAFE O PING

LEMON TEA

TEH O LIMAU PING

SIRAP LIMAU PING

NESCAFE NAI PING

NESLO NAI PING

Nasi Kerabu Terminal

Maskur II, 91100 Lahad Datu,
Sabah, Malaysia

Öffnungszeiten:

Montag 07:00 -19:00

Dienstag 07:00 -19:00

Mittwoch 07:00 -19:00

Donnerstag 07:00 -19:00

Freitag 07:00 -19:00

Samstag 07:00 -19:00

Sonntag 07:00 -19:00

Gemacht mit [Menu](#)